

Time Monitoring Tool User Interface Prototype

Version <3.0>

TMT	Version: <3.0>
User Interface Prototype	Date: <02/04/2001>
upedu_ex_uiprt.doc	

Revision History

Date	Version	Description	Author
15/02/2001	01	First version	Sandra Lee
20/02/2001	02	Modifications applied as requested by lab attendant.	Sandra Lee
02/04/2001	03	Major updates of all GUI images.	James Prevost

TMT	Version: <3.0>
User Interface Prototype	Date: <02/04/2001>
upedu_ex_uiprt.doc	

Preface

The following case study has been modified from its original content. The case study is meant to be used as a starting point to help you understand how to use the artifact. Thus, information has been shrunk to avoid navigating an enormous document (in size and pages).

You can also refer to the related template (in HTML format or WORD format) in the UPEDU Artifacts Templates Requirements Section.

Regards,

Unified Process for Education Team

TMT	Version: <3.0>
User Interface Prototype	Date: <02/04/2001>
upedu_ex_uiprt.doc	

Table of Content

1. Introduction	6
1.1 Purpose	6
1.2 Scope	6
1.3 Definitions, Acronyms, and Abbreviations	6
1.4 References	6
1.5 Overview	6
2. Identification Interfaces	7
2.1 Primary Windows	7
2.1.1 <User Identification>	7
2.2 Secondary Windows: Property Windows	9
2.3 Secondary Windows: Other Windows	9
2.3.1 <Wrong User Name>	9
2.3.2 <Wrong Password>	10
2.3.3 <Account Deactivated>	11
3. Developer Client-Module Interfaces	13
3.1 Primary Windows	13
3.1.1 <Developer Client module Main Screen>	13
3.2 Secondary Windows: Property Windows	16
3.3 Secondary Windows: Other Windows	17
3.3.1 <Timestamps Statistics>	17
4. Manager Client-Module Interfaces	19
4.1 Primary Windows	19
4.1.1 <Manager Client-Module Main Screen>	19
4.2 Secondary Windows: Property Windows	21
4.2.1 <Add a new user>	21
4.2.2 <Validate new timestamps>	23
4.3 Secondary Windows: Other Windows	23
5. Graphics Standards	24
6. Other Standards	24
7. Browsing Hierarchy	25

TMT	Version: <3.0>
User Interface Prototype	Date: <02/04/2001>
upedu_ex_uiprt.doc	

Figures

Figure 1: User Identification Interface	8
Figure 2: Wrong Username Interface	10
Figure 3: Wrong Password Interface	11
Figure 4: Account Deactivated Interface	12
Figure 5: Developer Client module Main Screen Interface (3 main parts) - Timestamps	16
Figure 6: Timestamps Statistics Interface	18
Figure 7: Manager Client-Module Main Screen Interface	20
Figure 8: Add a new user	23
Figure 9: Graphical Interfaces Hierarchy.....	25

TMT	Version: <3.0>
User Interface Prototype	Date: <02/04/2001>
upedu_ex_uiprt.doc	

User Interface Prototype

1. Introduction

1.1 Purpose

The User Interface Prototype document presents explicitly what the TMT user will see on the screen and how to use these different graphical interfaces. This document represents also, graphically, the model developed and detailed in the project's documentation. Moreover, this document can be used as a demonstration for future end-users in order to preview the final product.

1.2 Scope

The following roles use the user-interface prototype:

- Analysts, to understand the user interface for a use case and how the user interface impacts the analysis of the system
- Designers, to understand how the user interface impacts and what it requires from the "inside" of the system
- Testers, to plan testing activities.
- Stakeholders as a preview of the interface they will use.

1.3 Definitions, Acronyms, and Abbreviations

Refer to the project's Glossary. See References.

1.4 References

- Glossary Document, Glossary, TMT Team 1, École Polytechnique de Montréal, 2001.
- [Course Web Page INF4302 : <http://www.cours.polymtl.ca/inf4302/>
- UPEDU : <http://www.upedu.org>

1.5 Overview

This document is divided in three main sections: Identification interfaces, Developer Client-Module Interface and Manager Client-Module Interface. All sections contain graphical information about their related primary and secondary windows.

Further you will find a brief description on the different graphics standards used in the Time Monitoring Tool and an interface browsing hierarchy.

TMT	Version: <3.0>
User Interface Prototype	Date: <02/04/2001>
upedu_ex_uiprt.doc	

2. Identification Interfaces

2.1 Primary Windows

2.1.1 <User Identification>

2.1.1.1 Purpose

When a user wishes to use the TMT, he has to identify himself with a username and password. The user identification window ensures that all fields (username and password) are filled correctly. The validation is made upon clicking the « Enter » button.

2.1.1.2 Objects and actions

Objects	Actions
Text Input – Username	Allows the user to type in his username
Text Input – Password	Allows the user to type in his password
Button – Enter	Launch the username/password validation query and grant the user access if provided information is validated. Otherwise redirects the user to an error page.
Button – Reset	Allows the user to erase the content of the two Text Input field described above

2.1.1.3 Composites

This window contains 5 frames (web frames):

- **Left Frame:** Acts as a border frame, containing the gray background the left side.
- **Right Frame:** Acts as a border frame, containing the gray background the right side.
- **Top Frame:** Acts as a border frame, containing the gray background the top side.
- **Bottom Frame:** Acts as a border frame, containing the gray background the bottom side.
- **Main Frame:** Displays the information and action objects of the <User Identification> primary window

2.1.1.4 Visual Dimensions

Position

This window has the following attributes: *scrollable*, *movable* and all user-defined position properties of the browser used by the user (Standard web window)

Size

This window has the following attributes: *minimizable*, *restorable*, *resizable*, *closeable* and all user-defined size properties of the browser used by the user (Standard web window)

Shape

Standard web window (Rectangle).

TMT	Version: <3.0>
User Interface Prototype	Date: <02/04/2001>
upedu_ex_uiprt.doc	

Color

No specific color schemes defined.

2.1.1.5 Screenshot Sample

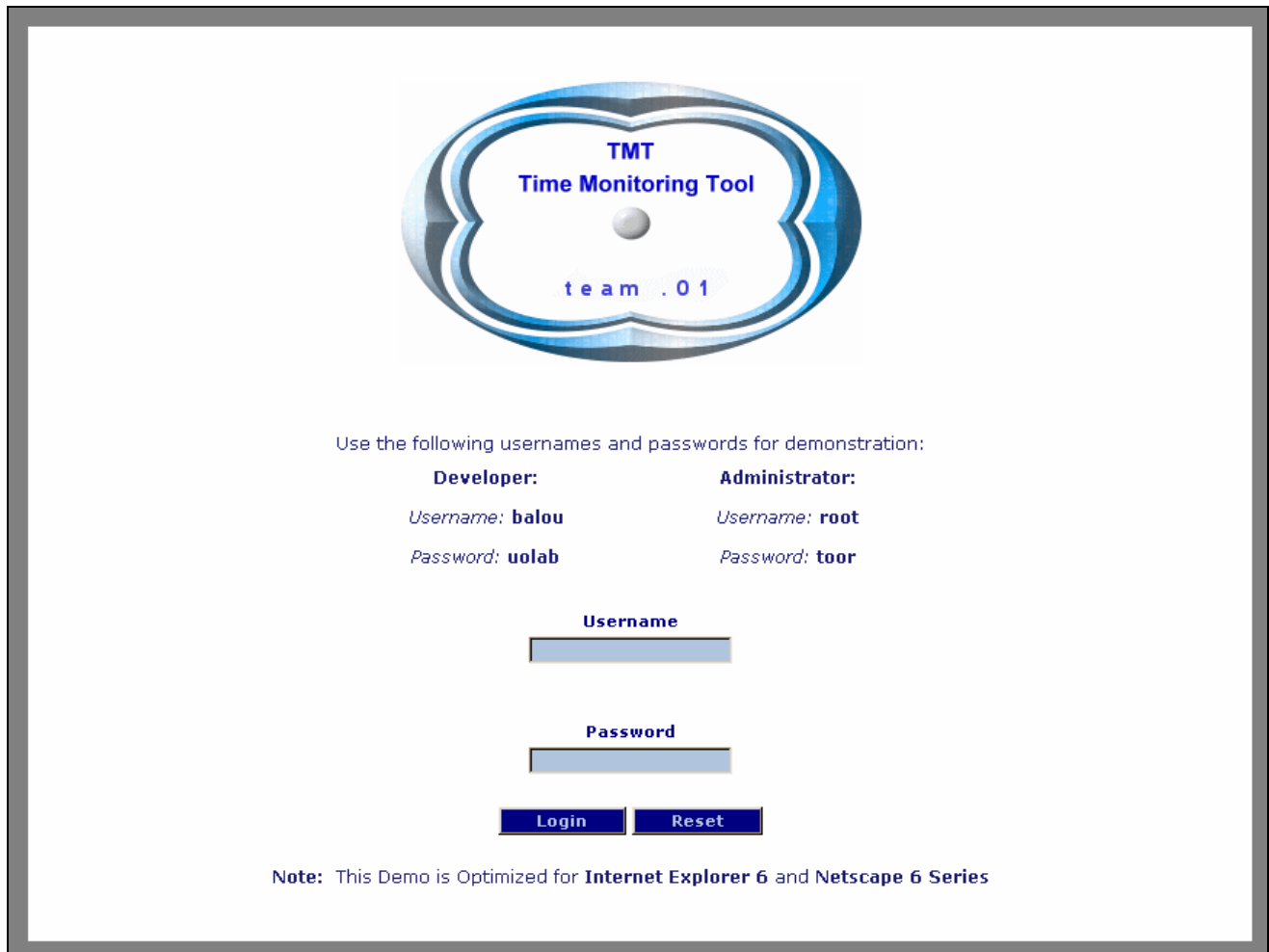


Figure 1: User Identification Interface

TMT	Version: <3.0>
User Interface Prototype	Date: <02/04/2001>
upedu_ex_uiprt.doc	

2.2 Secondary Windows: Property Windows

None.

2.3 Secondary Windows: Other Windows

2.3.1 <Wrong User Name>

2.3.1.1 Purpose

If the entered username doesn't exist in the Database, the validation process redirects the user to a Wrong Username page.

2.3.1.2 Objects and actions

Objects	Actions
Hyperlink – Try Again	Allows the user to go back to the primary window and type in his username and password again

2.3.1.3 Composites

None

2.3.1.4 Visual Dimensions

Position

This window has the following attributes: *floating (Top left of screen)*

Size

This window has the following attributes: *minimizable, closeable*

Shape

Standard web window (Rectangle).

Color

No specific color schemes defined.

TMT	Version: <3.0>
User Interface Prototype	Date: <02/04/2001>
upedu_ex_uiprt.doc	

2.3.1.5 Screenshot Sample

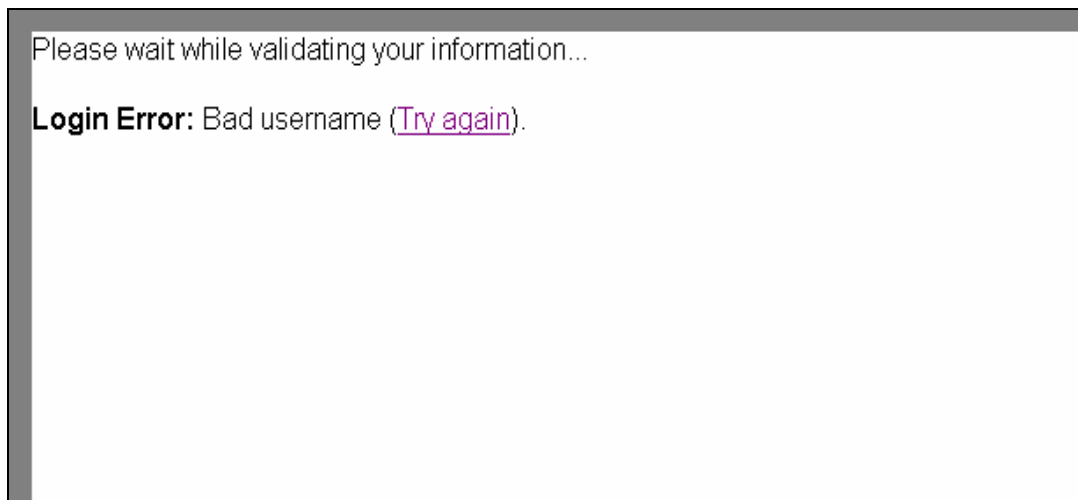


Figure 2: Wrong Username Interface

2.3.2 <Wrong Password>

2.3.2.1 Purpose

Once the username has been validated, if the entered password doesn't match the username in the Database, the validation process redirects the user to a Wrong Password page.

2.3.2.2 Objects and actions

Objects	Actions
Hyperlink – Try Again	Allows the user to go back to the primary window and type in his username and password again

2.3.2.3 Composites

None

2.3.2.4 Visual Dimensions

Position

This window has the following attributes: *floating (Top left of screen)*

Size

This window has the following attributes: *minimizable, closeable*

Shape

Standard web window (Rectangle).

Color

No specific color schemes defined.

TMT	Version: <3.0>
User Interface Prototype	Date: <02/04/2001>
upedu_ex_uiprt.doc	

2.3.2.5 Screenshot Sample

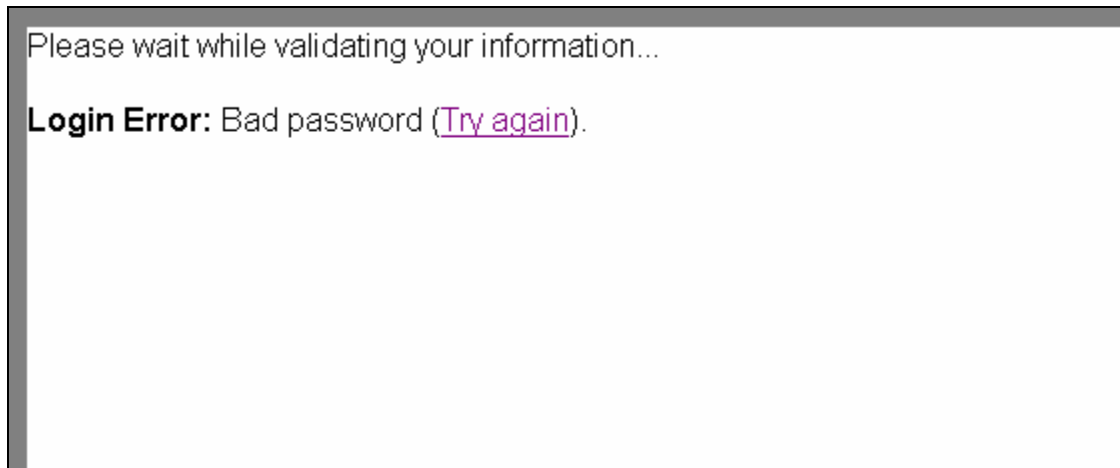


Figure 3: Wrong Password Interface

2.3.3 <Account Deactivated>

2.3.3.1 Purpose

Once the username and password have been validated, the user profile is deactivated; the validation process redirects the user to an Account Deactivated Page.

2.3.3.2 Objects and actions

Objects	Actions
Hyperlink – Back to Login Screen	Allows the user to go back to the primary window

2.3.3.3 Composites

None

2.3.3.4 Visual Dimensions

Position

This window has the following attributes: *floating (Top left of screen)*

Size

This window has the following attributes: *minimizable, closeable*

Shape

Standard web window (Rectangle).

Color

No specific color schemes defined.

TMT	Version: <3.0>
User Interface Prototype	Date: <02/04/2001>
upedu_ex_uiprt.doc	

2.3.3.5 Screenshot Sample

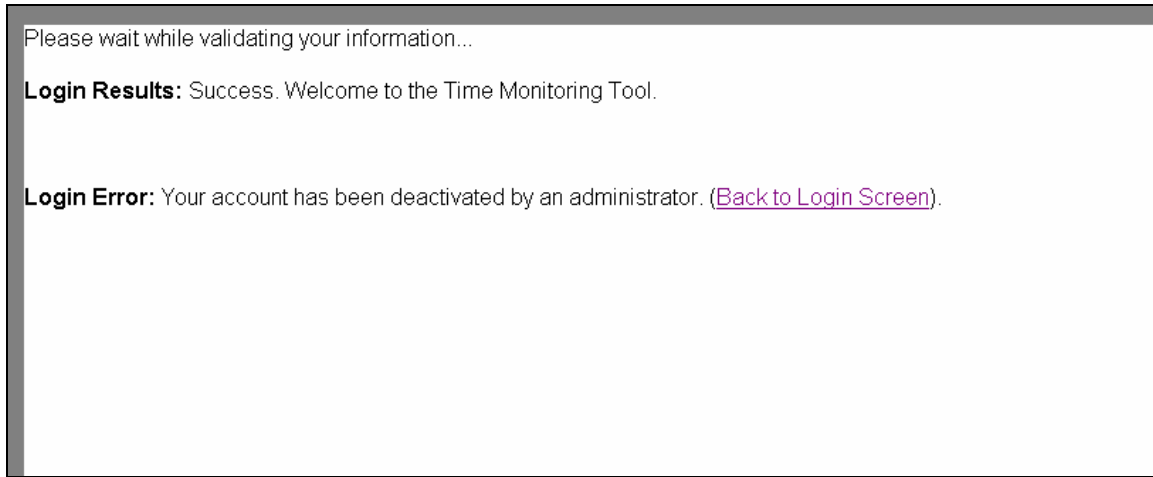


Figure 4: Account Deactivated Interface

TMT	Version: <3.0>
User Interface Prototype	Date: <02/04/2001>
upedu_ex_uiprt.doc	

3. Developer Client-Module Interfaces

3.1 Primary Windows

3.1.1 <Developer Client module Main Screen>

3.1.1.1 Purpose

If the login step has been validated, a Developer gets the following interface. This is his main work screen where he can view, modify or add timestamps. Moreover, this primary window shows some timestamps statistics (Total hours stamped).

3.1.1.2 Objects and actions

Objects	Actions
Text Input – Username	Display only.
Text Input – Date/Time	Display only
Button – CheckAll Timestamps to resubmit (TR)	Enables all check boxes in the TR table.
Check Box – TR	Enables one row in the TR table
Text Input – Date TR	Date of submitted TR
Select Box – Project TR	Project of TR
Text Input – Start TR	Starting hour of TR
Text Input – End TR	Ending hour of TR
Text Input – Length TR	Length of TR
Select Box – Task TR	Task name TR
Select Box – Artifact TR	Artifact name TR
Select Box – Activity TR	Related activity name TR
Text Input – Description TR	Brief task description TR
Button - Resubmit timestamps	Allows the developer to re-submit his timestamp
Text Input – Date New Timestamp (NT)	Date of NT
JScript Button – Calendar NT	Pops up a calendar JavaScript Window allowing the developer to select a specific date instead of type manually the date in the timestamp date field.
Select Box – Project NT	Project of NT
Text Input – Start NT	Starting hour of NT
Text Input – End NT	Ending hour of NT

TMT	Version: <3.0>
User Interface Prototype	Date: <02/04/2001>
upedu_ex_uiprt.doc	

Text Input – Length NT	Length of NT
Select Box – Task NT	Task name NT
Select Box – Artifact NT	Artifact name NT
Select Box – Activity NT	Related activity name NT
Text Input – Description NT	Brief task description NT
Button – Submit NT	Allows the developer to submit his timestamp
Button – End session	Terminates the developer session and logs out
Button – View Stats	Shows the timestamps current week’s statistics

3.1.1.3 Composites

This window contains 5 frames (web frames):

- **Left Frame:** Acts as a border frame, containing the gray background the left side.
- **Right Frame:** Acts as a border frame, containing the gray background the right side.
- **Top Frame:** Acts as a border frame, containing the gray background the top side.
- **Bottom Frame:** Acts as a border frame, containing the gray background the bottom side.
- **Main Frame:** Displays the information and action objects of the < *Developer Client module Main Screen* > primary window

This window contains 2dynamic tables driven with JSP technology and static HTML table.

Dynamic tables:

- *Current week timestamps; Included* components are: indicator (non-validated and validated timestamps), date, project, starting hour, ending hour, length, task, artifact, activity and description. This is a read-only table.
- *Timestamps to be re-submitted; Included* components are: CheckAll box, specific timestamp checkbox, date, project, starting hour, ending hour, length, task, artifact, activity and description.

Static HTML table:

- *New Timestamps to be submitted; Included* components are: date, JScript Calendar button, project, starting hour, ending hour, length, task, artifact, activity and description. This is a read-only table. There are a total of 5 rows in that table.

3.1.1.4 Visual Dimensions

Position

This window has the following attributes: *scrollable*, *movable* and all user-defined position properties of the browser used by the user (Standard web window)

TMT	Version: <3.0>
User Interface Prototype	Date: <02/04/2001>
upedu_ex_uiprt.doc	

Size

This window has the following attributes: *minimizable, restorable, resizable, closeable* and all user-defined size properties of the browser used by the user (Standard web window)


Shape

Standard web window (Rectangle).

Color

No specific color schemes defined.

3.1.1.5 Screenshot Sample



Currently Logged in: **balou** Current Date and Time: **Thu Jun 13 17:31:24 EDT 2002**

Current Week's Timestamps List (Last Monday 'till now, 2002-06-10 to 2002-06-13)

Date	Project	Start	Endd	Duration	Task	Artifact	Activity	Short Description
2002-06-10	P1	09h00	12h00	03:00	A task for project P1	Analysis Classes	Use Case Analysis	A short description?
2002-06-10	P1	15h00	18h00	03:00	Another task for projec	Analysis Classes	Architectural Analysis	A short description?
2002-06-11	P1	01h00	02h00	01:00	Another Task sample P	Analysis Classes	Architectural Analysis	A short description?
2002-06-11	P2	01h00	02h00	01:00	Cognitive task on P2	Analysis Classes	Architectural Analysis	A short description?
2002-06-11	P2	10h00	11h00	01:00	A task for project P2	Test Evaluation	Plan Test	A short description?
2002-06-13	P1	12h00	13h00	01:00	Simplest Task to P1	Workspace	Use Case Design	Small Description

Legend: [Validated Timestamps] - [Non-Validated Timestamps]

Timestamps to Resubmit (Rejected by Administrators)

Selection [1st click: ALL, 2nd click: None]

	Date	Project	Start	End	Duration	Task	Artifact	Activity	Description	Correction message
<input type="checkbox"/>	2002-06-11	P2	16h00	17h30	01:30	Another task for P2	Workspace	Make Change	Update workspace files	

Resubmit Timestamps

TMT	Version: <3.0>
User Interface Prototype	Date: <02/04/2001>
upedu_ex_uiprt.doc	

New Timestamps Form

Date	Project	Start	End	Duration	Task	Artifact	Activity	Short Description
2002-06-13	P1	00h00	00h00	00:00		Workspace	Use Case Design	
2002-06-13	P1	00h00	00h00	00:00		Workspace	Use Case Design	
2002-06-13	P1	00h00	00h00	00:00		Workspace	Use Case Design	
2002-06-13	P1	00h00	00h00	00:00		Workspace	Use Case Design	
2002-06-13	P1	00h00	00h00	00:00		Workspace	Use Case Design	

Submit new Timestamps

View Week's Stats End Session

Figure 5: Developer Client module Main Screen Interface (3 main parts) - Timestamps

3.2 Secondary Windows: Property Windows

None.

TMT	Version: <3.0>
User Interface Prototype	Date: <02/04/2001>
upedu_ex_uiprt.doc	

3.3 Secondary Windows: Other Windows

3.3.1 <Timestamps Statistics>

3.3.1.1 Purpose

Shows weekly statistics for the current user. Timestamps durations are calculated by day, by project and by task.

3.3.1.2 Objects and actions

Objects	Actions
Button – Back to the DCM	Allows the user to go back to the primary window and view the DCM data

3.3.1.3 Composites

None

3.3.1.4 Visual Dimensions

Position

This window has the following attributes: *scrollable*, *movable* and all user-defined position properties of the browser used by the user (Standard web window)

Size

This window has the following attributes: *minimizable*, *restorable*, *resizable*, *closeable* and all user-defined size properties of the browser used by the user (Standard web window)

Shape

Standard web window (Rectangle).

Color

No specific color schemes defined.

TMT	Version: <3.0>
User Interface Prototype	Date: <02/04/2001>
upedu_ex_uiprt.doc	

3.3.1.5 Screenshot Sample

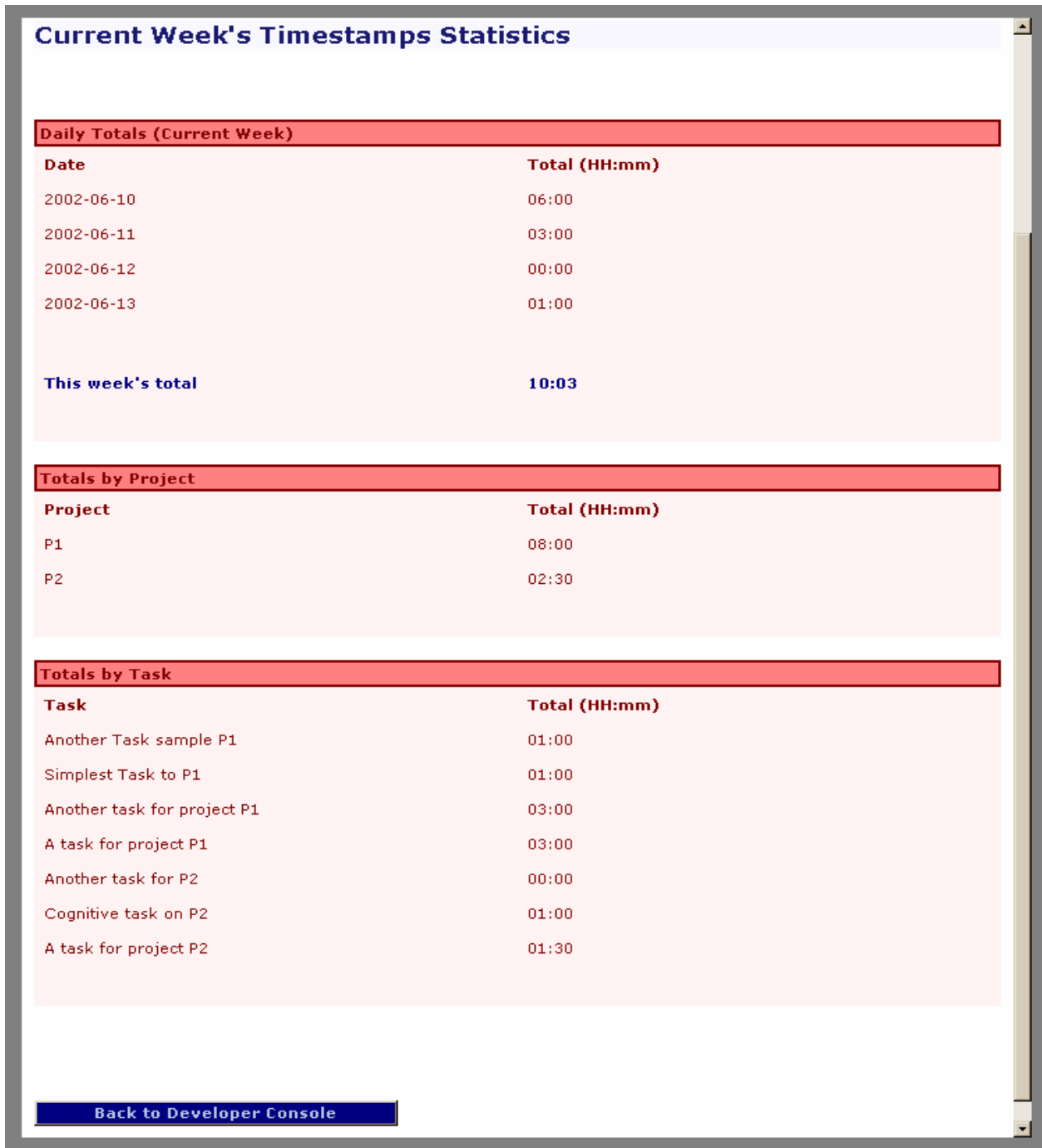


Figure 6: Timestamps Statistics Interface

TMT	Version: <3.0>
User Interface Prototype	Date: <02/04/2001>
upedu_ex_uiprt.doc	

4. Manager Client-Module Interfaces

4.1 Primary Windows

4.1.1 <Manager Client-Module Main Screen>

4.1.1.1 Purpose

If the login step has been validated, a Manager gets the following interface. This is his main work screen where he can manage system users (Add, list, deactivate, modify, validate timestamps) or manage active projects (add project, add task, Export to MS-Excel, Export to MS-Project).

4.1.1.2 Objects and actions

Objects	Actions
Text Input – Username	Display only.
Text Input – Date/Time	Display only
JScript Object – Left Menu Option: Add user	Redirects the manager to the <i>Add a new user Secondary Window</i>
JScript Object – Left Menu Option: Validate timestamps	Redirects the manager to the <i>Validate New Timestamps Secondary Window</i>
JScript Object – Left Menu Option: List/Modify/Deactivate	Redirects the manager to the <i>List/Modify/Deactivate Secondary Window</i>
JScript Object – Right Menu Option: Add a project	Redirects the manager to the <i>Add a Project Secondary Window</i>
JScript Object – Right Menu Option: Add a task	Redirects the manager to the <i>Add a Task Secondary Window</i>
JScript Object – Right Menu Option: Export to MSEXCEL	Redirects the manager to the <i>Export to EXCEL Secondary Window</i>
JScript Object – Right Menu Option: Export to MSPROJECT	Redirects the manager to the <i>Export to MSPROJECT Secondary Window</i>

4.1.1.3 Composites

This window contains 5 frames (web frames):

- **Left Frame:** Acts as a border frame, containing the gray background the left side.
- **Right Frame:** Acts as a border frame, containing the gray background the right side.
- **Top Frame:** Acts as a border frame, containing the gray background the top side.
- **Bottom Frame:** Acts as a border frame, containing the gray background the bottom side.
- **Main Frame:** Displays the information and action objects of the < *Manager Client-Module Main Screen* > primary window

TMT	Version: <3.0>
User Interface Prototype	Date: <02/04/2001>
upedu_ex_uiprt.doc	

This window contains 2 JavaScript Menu Objects: The left menu has 3 submenu objects and the right menu has 4 submenu objects.

4.1.1.4 Visual Dimensions

Position

This window has the following attributes: *scrollable*, *movable* and all user-defined position properties of the browser used by the user (Standard web window)

Size

This window has the following attributes: *minimizable*, *restorable*, *resizable*, *closeable* and all user-defined size properties of the browser used by the user (Standard web window)

Shape

Standard web window (Rectangle).

Color

No specific color schemes defined.

4.1.1.5 Screenshot Sample

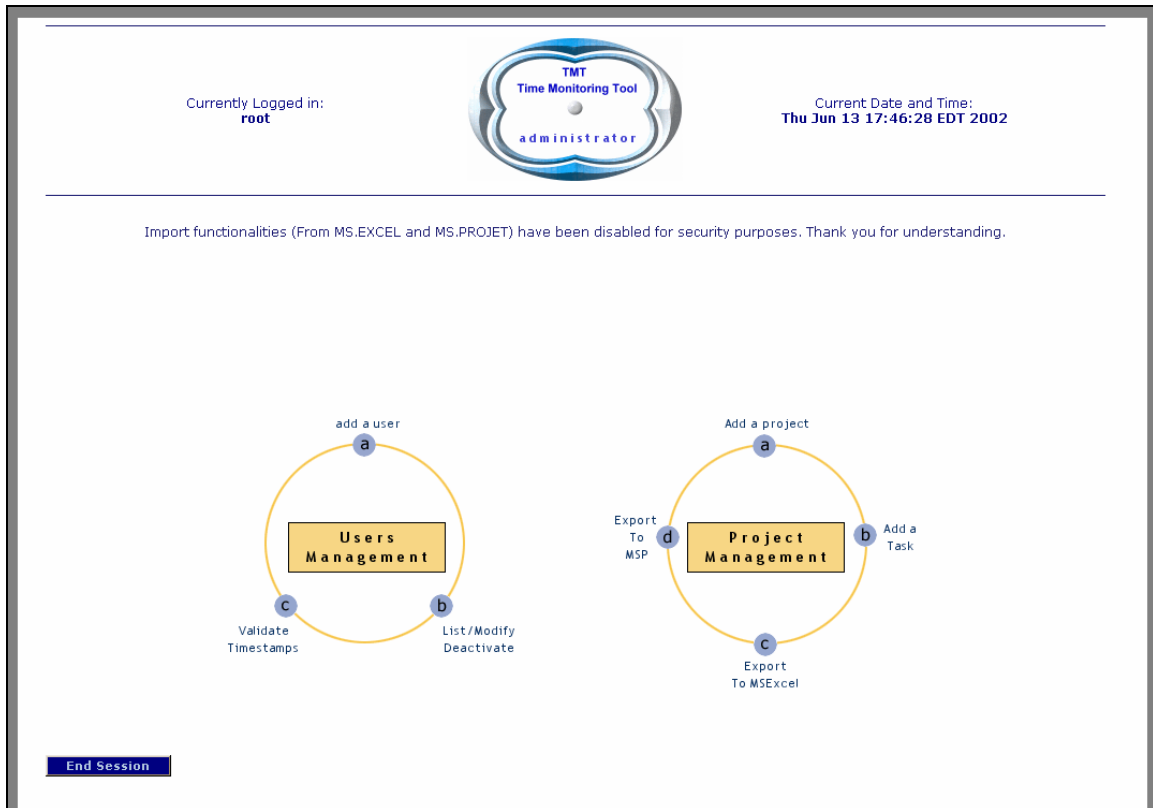


Figure 7: Manager Client-Module Main Screen Interface

TMT	Version: <3.0>
User Interface Prototype	Date: <02/04/2001>
upedu_ex_uiprt.doc	

4.2 Secondary Windows: Property Windows

4.2.1 <Add a new user>

4.2.1.1 Purpose

The Administrator can add users (developers) through this interface. Required fields are username, password, superior, and timestamps relative information. A submit button is used to activate the database INSERT query.

4.2.1.2 Objects and actions

Objects	Actions
Text Input – Username	Display only.
Text Input – Date/Time	Display only
Text Input – Username	Allows the manager to enter the developer's name
Text Input – Password	Allows the manager to enter the developer's password
Select Box – Superior	Allows the manager to select the developer's superior
Radio Buttons – Status	Allows the manager to select if the new user is a developer or a manager
Multiple Select Box - Projects	Allows the manager to multiple-select projects for the developer
Select Box – Default Project	Allows the manager to select a default project for the developer
Select Box – Default Task	Allows the manager to select a default task for the developer
Select Box – Default Activity	Allows the manager to select a default activity for the developer
Select Box – Default Artifact	Allows the manager to select a default artifact for the developer
Button – Submit	Submits the form and performs the Database INSERT query
Button – Reset/Erase	Erases all fields in the form
Hyperlink – Back to MCM	Redirects the manager to the main screen (The menus)

TMT	Version: <3.0>
User Interface Prototype	Date: <02/04/2001>
upedu_ex_uiprt.doc	

4.2.1.3 Composites

This window contains 5 frames (web frames):

- **Left Frame:** Acts as a border frame, containing the gray background the left side.
- **Right Frame:** Acts as a border frame, containing the gray background the right side.
- **Top Frame:** Acts as a border frame, containing the gray background the top side.
- **Bottom Frame:** Acts as a border frame, containing the gray background the bottom side.
- **Main Frame:** Displays the information and action objects of the <User Identification> primary window

This window contains 1 static HTML table containing all fields object described in the previous section.

4.2.1.4 Visual Dimensions

Position

This window has the following attributes: *scrollable*, *movable* and all user-defined position properties of the browser used by the user (Standard web window)

Size

This window has the following attributes: *minimizable*, *restorable*, *resizable*, *closeable* and all user-defined size properties of the browser used by the user (Standard web window)

Shape

Standard web window (Rectangle).

Color

No specific color schemes defined.

TMT	Version: <3.0>
User Interface Prototype	Date: <02/04/2001>
upedu_ex_uiprt.doc	

4.2.1.5 Screenshot Sample

Currently Logged in:
root

TMT
Time Monitoring Tool
administrator

Current Date and Time:
Thu Jun 13 17:47:35 EDT 2002

User Management - Add a user

Username:

Password:

Supervisor: root

User type: Developer Administrator

Projects:
P2

Default Project: P1

Default Task: A task for project P1

Default Activity: Architectural Analysis

Default Artifact: Analysis Classes

[Back to Administrator Console](#)

Figure 8: Add a new user

4.2.2 <Validate new timestamps>

[...]

4.3 Secondary Windows: Other Windows

None

TMT	Version: <3.0>
User Interface Prototype	Date: <02/04/2001>
upedu_ex_uiprt.doc	

5. Graphics Standards

All graphical interfaces and elements use HTML, DHTML and JavaScript web technologies interlaced with standard images formats (.GIF, .JPG, .PNG).

The color schemes may require a True Color Compatible graphical adapter and at least an 800x600 screen resolution. Best viewed at 1024x768 and over.

All fonts used are in the Helvetica and Arial font-family.

All graphical interfaces are best viewed in Internet Explorer 5+ and Netscape Navigator 4.79+

6. Other Standards

The TMT logo used has been designed by TMT Team 4 and supervised by member John Lemon.

If any special colors are used for a specific purpose, the explanation can be found on the web page itself (Legend or note)

TMT	Version: <3.0>
User Interface Prototype	Date: <02/04/2001>
upedu_ex_uiprt.doc	

7. Browsing Hierarchy

The following is a window hierarchy diagram showing how the different windows are linked together.

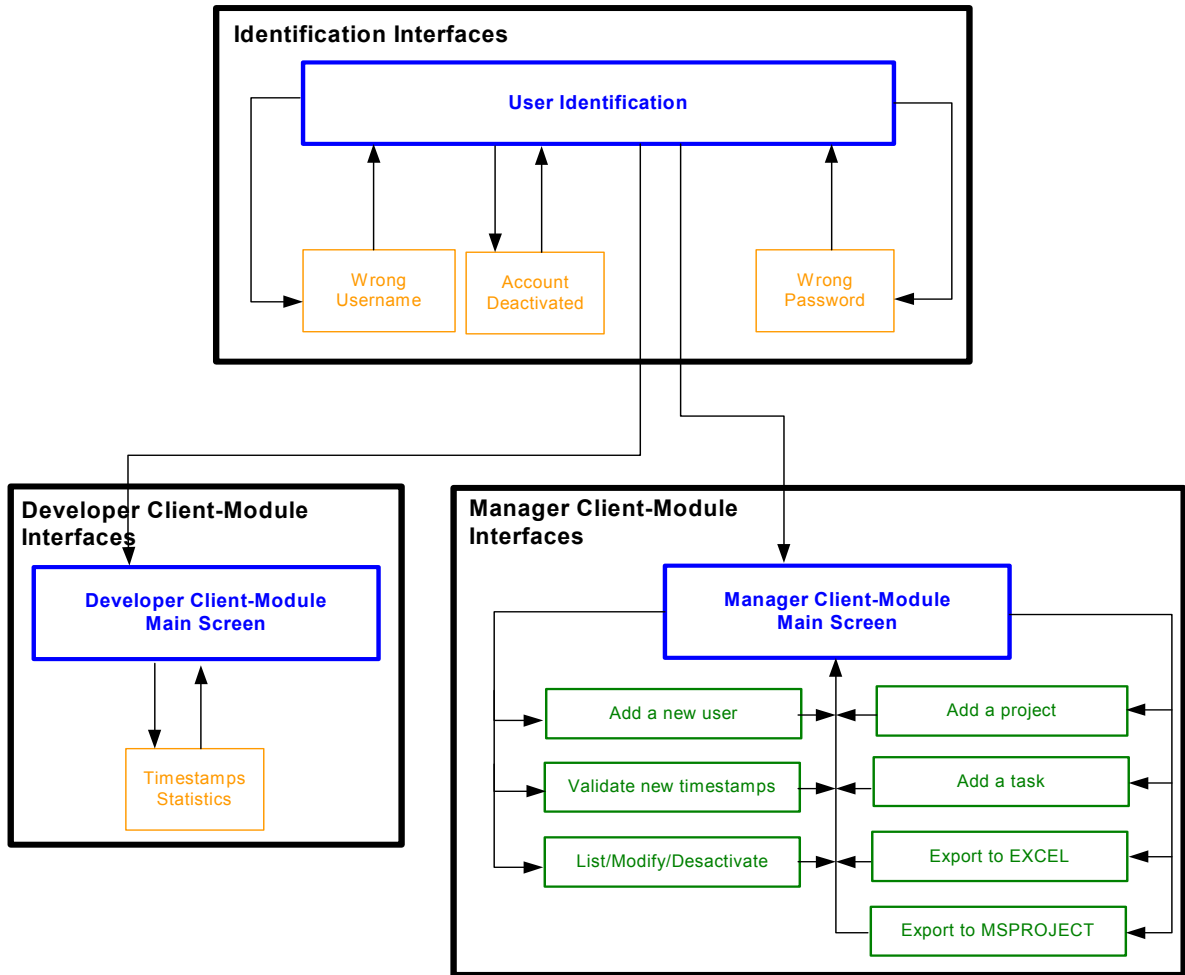


Figure 9: Graphical Interfaces Hierarchy